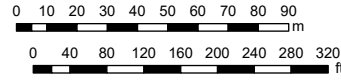


GRS: Oak Bay Marina

GRS #: SID0173

PDF Link



Map Centroid:
 123° 18' 6.12" W
 48° 25' 32.52" N
 N 1:2,500

CHS Chart Reference:

3424

Please Note: Responders must adhere to incident specific site safety plans and WCMRCs response safety plan and procedures at all times.

Legend

OPERATIONAL

- Shore Tie
- orange

ENVIRONMENTAL

- Fish Obstacle (S0005b)
- Critical Habitat (F0091)

SOCIO-EC

- Protected Area (Environment Canada)

- Marina (S0084a)

SHORELINE FEATURES

- Man-made
- Rock with sand and gravel beach
- Sand and gravel flat

BASE

Strategic Objective

Exclusion/Containment

Access

Water & Road

Cell Coverage

Radio Coverage

Staging Area

Royal Victoria Yacht Club

GRS Comments

Potential shore seal boom

Recommended Equipment

- 1 x units Broadwater Vessel (or Landing Craft)
- 2 x units Shore-tie
- 244 x metres Polysteel Rope
- 457 x metres Sheltered / Nearshore Boom (Orange)
- 6 x units Danforth Standard Anchor Kits
-

